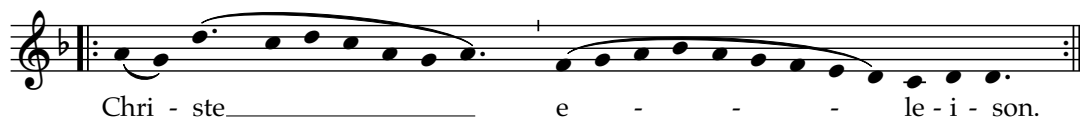
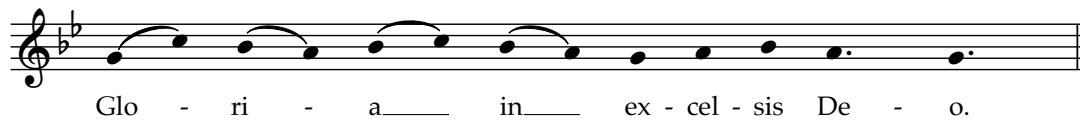


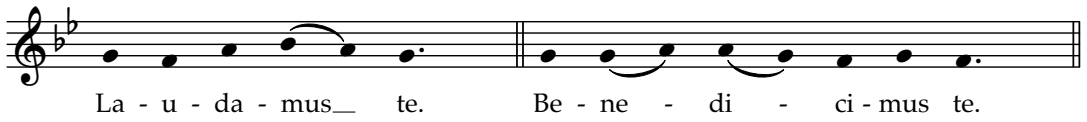
A3. MISSA "ORBIS FACTOR"

KYRIE

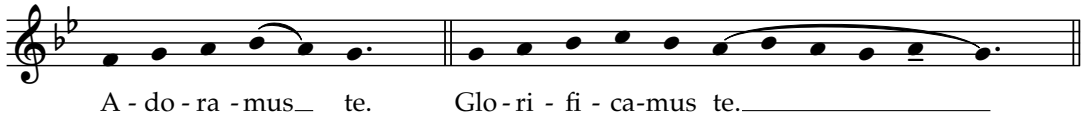


GLORIA

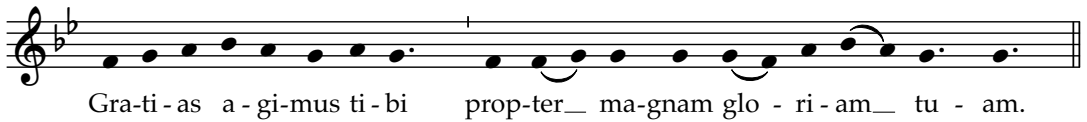




La - u - da - mus_ te. Be - ne - di - ci - mus te.



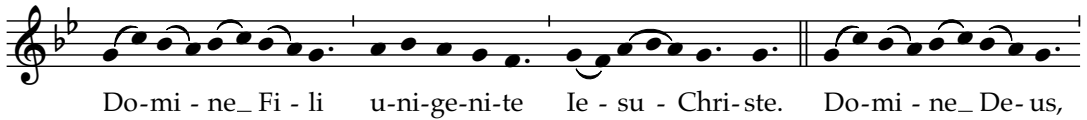
A - do - ra - mus_ te. Glo - ri - fi - ca - mus te.



Gra - ti - as a - gi - mus ti - bi prop - ter_ ma - gnam glo - ri - am_ tu - am.



Do - mi - ne_ De - us, Rex cae - les - tis, De - us_ Pa - ter om - ni - po - tens.



Do - mi - ne_ Fi - li u - ni - ge - ni - te Ie - su - Chri - ste. Do - mi - ne_ De - us,



A - gnus De - i, Fi - li - us_ Pa - tris.

Qui to - lis pec - ca - ta mun - di, mi - se - re - re__ no - bis.

Qui tol - lis pec - ca - ta mun - di, su - sci - pe de - pre - ca - ti - o - nem nos - tram.

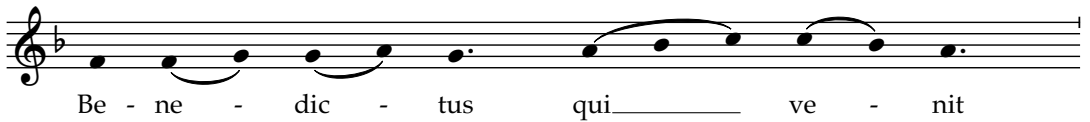
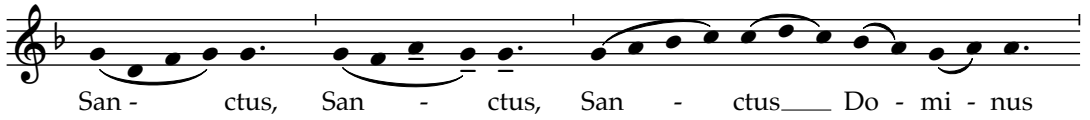
Qui__ se - des__ ad dex - te - ram Pa - tris, mi - se - re - re__ no - bis.

Quo - ni - am__ tu__ so - lus san - ctus. Tu__ so - lus Do - mi - nus.

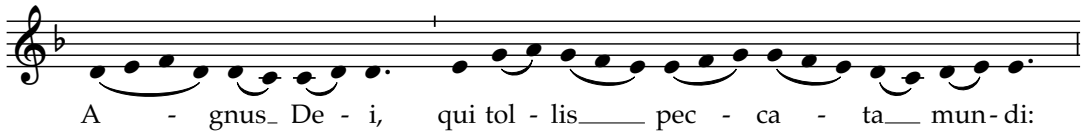
Tu so - lus Al - tis - si - mus, Ie - su__ Chri - ste. Cum San - to__ Spi - ri - tu,

in glo - ri - a De - i Pa - - tris__ A - men__

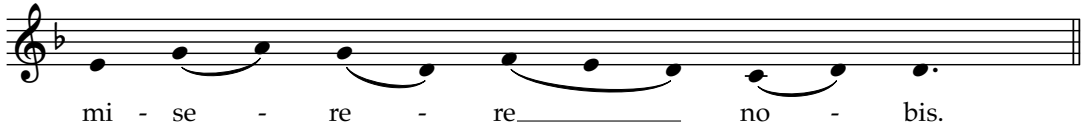
SANCTUS



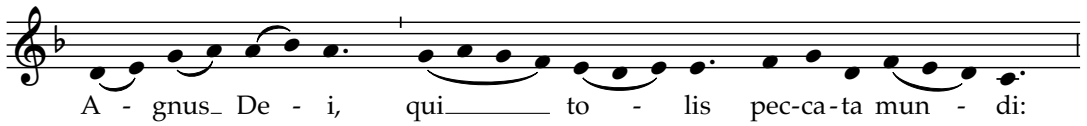
AGNUS DEI



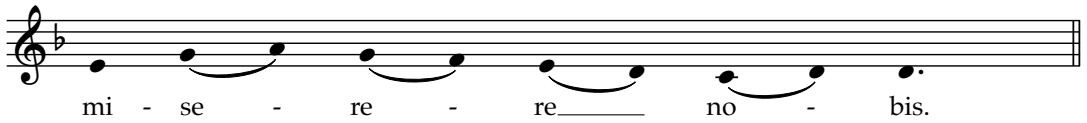
A - gnus De - i, qui tol - lis pec - ca - ta mun - di:



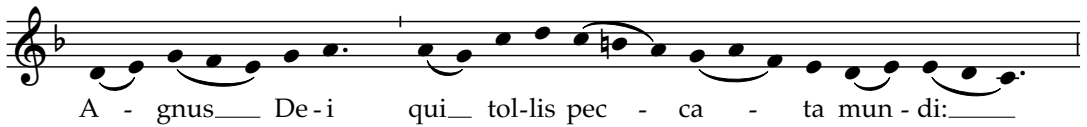
mi - se - re - re no - bis.



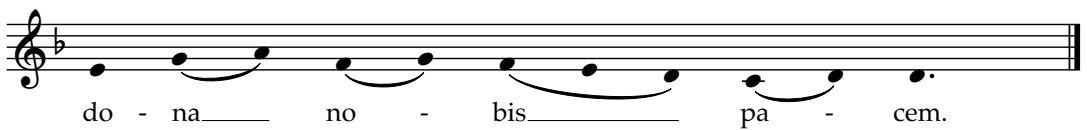
A - gnus De - i, qui to - lis pec - ca - ta mun - di:



mi - se - re - re no - bis.



A - gnus De - i qui tol - lis pec - ca - ta mun - di:



do - na no - bis pa - cem.