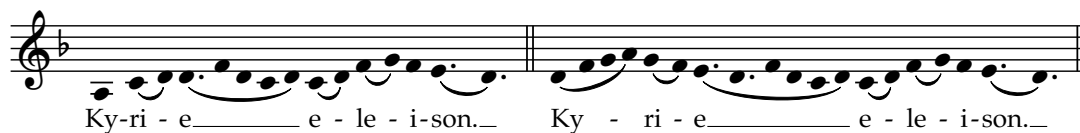


A2. MISSA "CUM JUBILO"

KYRIE



Ky - ri - e e - le - i - son.



Ky-ri - e e - le - i -son. Ky - ri - e e - le - i -son.



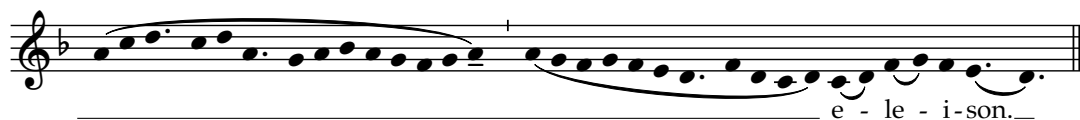
Chri-ste e-le - i -son. Chri - ste e - le - i -son.



Chri-ste e-le - i -son. Ky-ri - e e - le - i -son.



Ky - ri - e e - le - i -son. Ky-ri - e



e - le - i -son.

GLORIA



Glo - ri - a in ex - cel - sis_ De - o. Et in ter - ra pax ho - mi - ni - bus



bo-ne vo-lun-ta - tis. Lau-da - mus te. Be-ne - di-ci-mus te.



A - do - ra - mus te. Glo-ri - fi - ca - mus te.



Gra-ti-as a-gi-mus ti - bi prop-ter_ ma-gnam glo - ri - am_ tu - am.



Do-mi-ne_ De-us, Rex cae - les- tis, De-us_ Pa- ter_ om-ni - po - tens_



Do-mi-ne Fi - li u - ni - ge - ni - te Ie - su Chri - ste.



Do - mi-ne De-us, A - gnus De - i, Fi-li-us_ Pa - tris_

Qui tol - lis pec-ca - ta mun - di, mi - se - re - re__ no - bis.

Qui tol-lis_pec-ca-ta_mun-di,_ su - sci-pe de-pre-ca-ti-o - nem_no-stram.

Qui se-des ad dex-te-ram Pa-tris, mi - se - re - re__ no - bis.

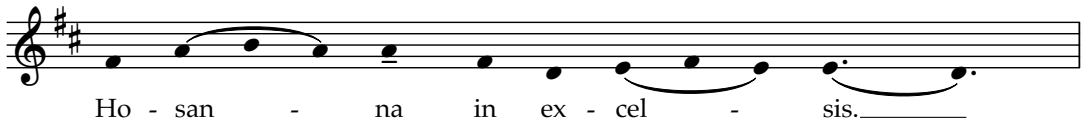
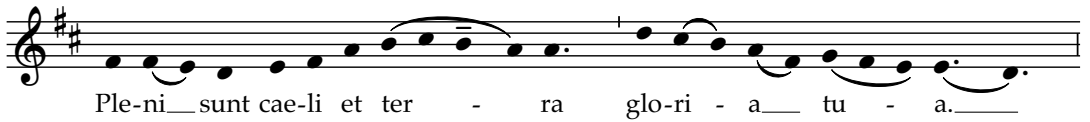
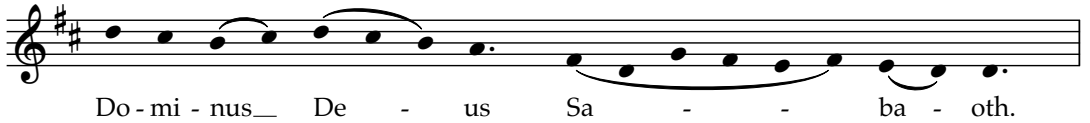
Quo-ni - am__ tu__ so-lus san - tus. Tu so - lus_____ Do-mi-nus.

Tu so - lus Al - tis - si - mus,_ Ie - su Chri - ste.

Cum San - cto__ Spi-ri-tu, in__ glo-ri - a De-i Pa - tris.

A - - - - - men._____

SANCTUS



AGNUS DEI

A - gnus De - i, qui tol - - lis

pec-ca - ta mun - di: mi - se - re - re__ no - bis.

A - gnus De - i, qui tol - lis

pec-ca - ta mun - di: mi - se - re - re__ no - bis.

A - gnus De - i, qui tol - - lis

pec-ca - ta mun - di: do - na__ no - bis__ pa - cem.