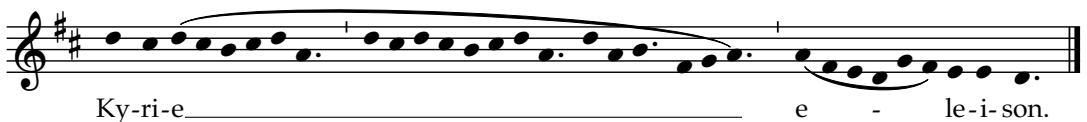


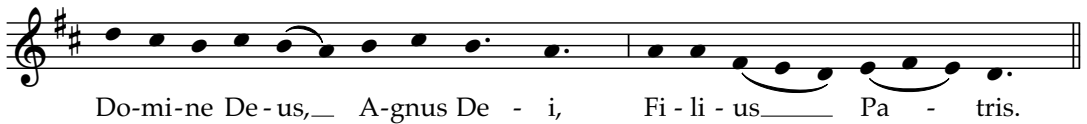
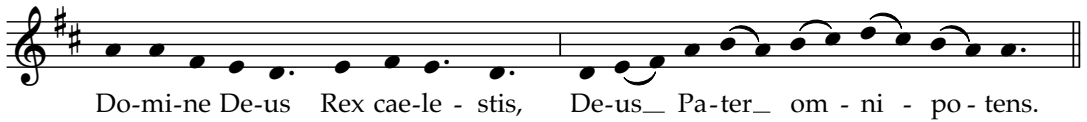
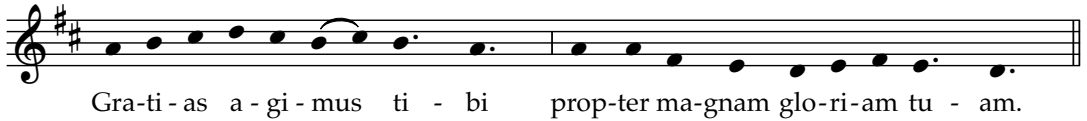
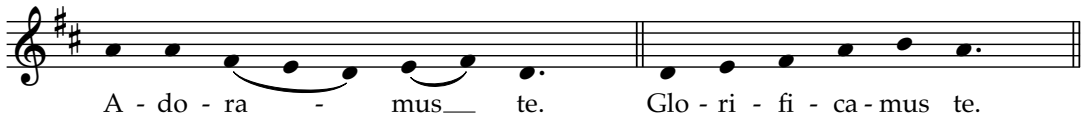
# A1. MISSA "DE ANGELIS"

## KYRIE



## GLORIA





Qui tol-lis pec-ca-ta mun-di, su-sci-pe de-pre-ca-ti-o-nem no - stram..

Qui se-des ad dex-te-ram Pa - tris, mi-se-re-re no - bis.

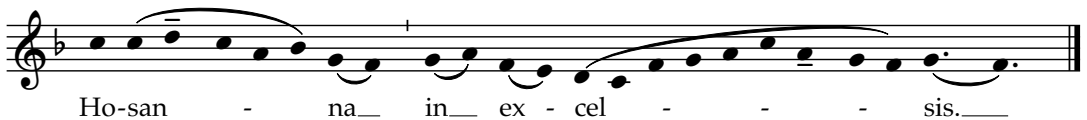
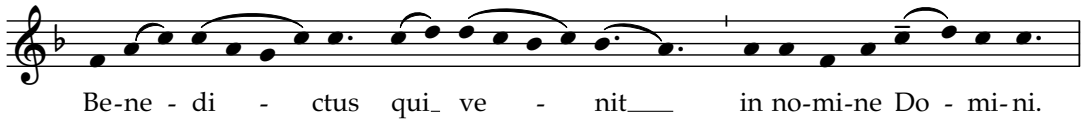
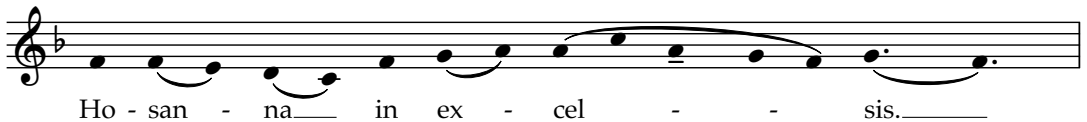
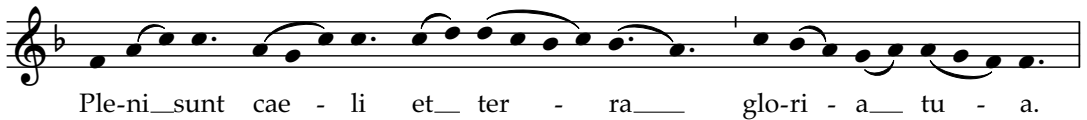
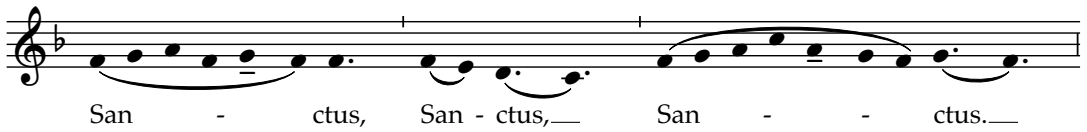
Quo-ni-am tu so-lus san - ctus. Tu so - lus\_\_ Do - mi - nus.

Tu so-lus Al - tis - si - mus,\_\_ Ie - su\_\_ Chri - ste.

Cum San-cto\_\_ Spi - ri - tu, in glo-ri - a De-i Pa - tris.\_\_

A - - - - - men.\_\_\_\_\_

# SANCTUS



# AGNUS DEI

A - gnus De - i, qui tol - lis pec-ca - ta mun - di:

mi - se - re - re no - bis.

A - gnus De - i, qui tol - lis pec-ca - ta mun - di:

mi - se - re - re no - bis.

A - gnus De - i, qui tol - lis pec-ca - ta mun - di:

do - na no - bis pa - cem.